

Ing. J. de Wijs.
Populierstraat 44,
4131 AR Vianen,
the Netherlands

Tel/Fax. +31 (0)347-372242
e-mail: info@dewijs-3d.com
Website: www.dewijs-3d.com



DE WIJS

Design and production of stereoscopic instruments.

Bank: Postbank account: 6084601,
Swiftcode: INGBNL2A
Bank code: NL24PSTB0006084601

Tax number: NL 1899.16.084 B01
K.v.K. Reg. N° 23071201 Utrecht

USER MANUAL FOR THE PANEL VIEWER



MODELS:

**05-04-PSTSLA
05-04-PSTSLM
05-04-PCCFLA
05-04-PCCFLM**

Last update May 2011

Purpose:


The viewer can be mounted against a panel or inside a socle to show one single 3-D (stereoscopic) slide.

Changes:

August 2005	First panel type of panel viewer released 05-04-Pxxxxx
July 2008	Front plate enlarged, additional cover for electronics on rear. CCFL inverter protected against wrong polarity
June 2009	Metal frame and cover for electronics changed in shape. Powered by an AC 14-15 Volts adapter. Additional 12 Volts dc rectifier inside. Change of brand CCFL inverter.

Current Features:

- Applicable for slide frame format 50x50 mm. **2 mm.** thickness. and 41x101 mm. **3 mm.** thickness
- Maximum picture format 24x36 mm. Standing and lying slides.
- Coated achromatic lens ϕ 30 mm. F= 60 mm. (enlargement 4.2) high resolution (05-04-PSTLA) and 05-04-PCCFLA). Fixed focus. Or meniscus lenses \emptyset
- Viewing angle 30° with reference to the base.
- A frosted acryl plate glass (05-04-PSTLx), for light dispersion is mounted beyond the focal point. In this case you should mount your own light source behind viewer.
- A CCFL white tube light illumination (05-04-PCCFLx), provides a smooth light source to give the slide its natural bright colours. CCFL stands for Cold Cathode Fluorescent Lamp. Lifecycle is 10.000 hours. Colour temperature is 5500 Kelvin.
- For AC powered viewers: the circuit uses 300 mA. at 14-15 Volts AC. So you need a 14 Volts AC-AC adapter.

14-15 Volt ac

 500 mA. 5.5-
 2.1 mm. plug

Spare parts for the viewer such as the lenses, the CCFL unit and the frosted acryl plate can be ordered at the de Wijs company.

Warning:

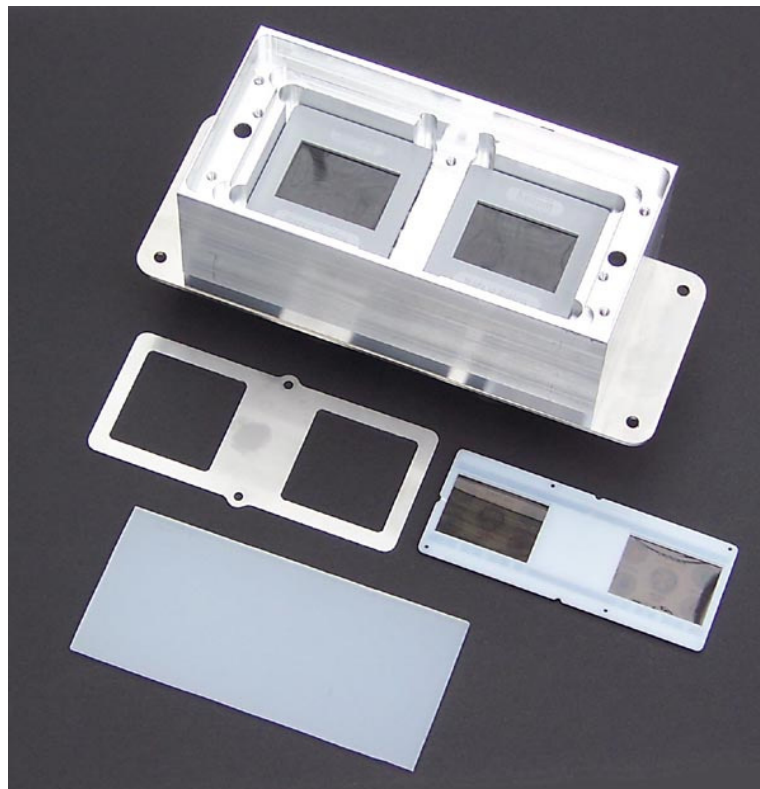
The viewer is shipped with unlocked lens barrels. You can take the barrels out of the housing if needed. Lock them with glue in the housing when it is used.

Replacing slides: without lamp

05-04-PSTLx:



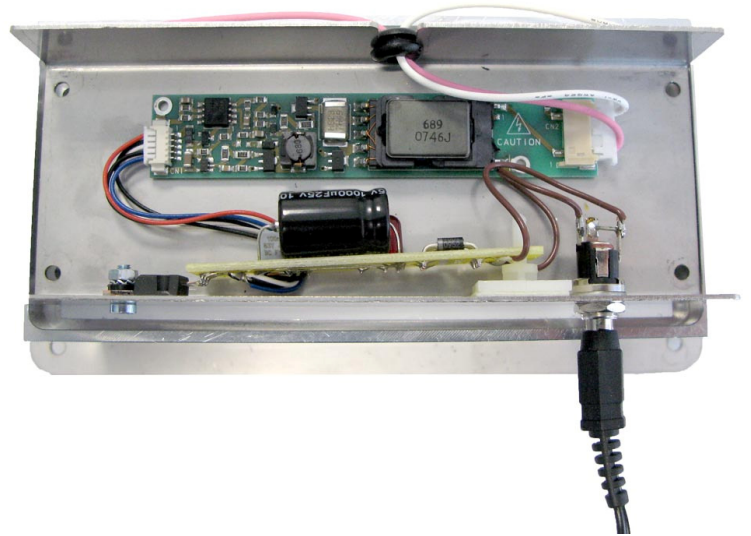
On the rear of the non- illuminated model there is only a frosted glass on the rear. With two small M3 bolts you can remove this acryl plate and the slide is visible.



Remove the two bolts holding the small metal frame that keeps the slide in its slot. Now you are able to exchange the slides. Check that there is no dust on the slides and on the rear of the lenses. With a soft brush or compressed air you can remove small dust parts. Remount the small metal frame over the slide first with the two bolts. Replace the frosted glass and lock it with the other two bolts.

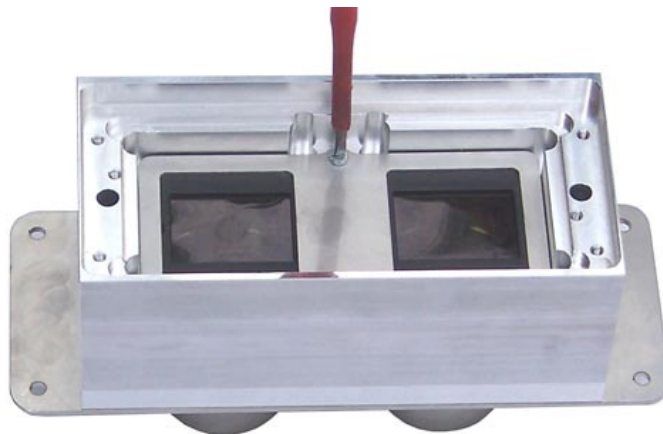
Replacing slides: with CCFL lamp

05-04-PCCFLx:



14-15 Volts AC powered viewer

On the rear you see the small inverter for the CCFL lamp mounted on a metal plate. Remove this metal plate that locks up the CCFL panel by removing the four bolts at the edges.



Remove the two screws holding the small metal frame that keeps the slide in its slot. Now you are able to exchange the slides. Check that there is no dust on the slides and on the rear of the lenses. With a soft brush or compressed air you can remove small dust parts. Remount the small metal frame over the slide first with the two screws. Then replace the CCFL panel and lock it up with the metal plate holding the CCFL inverter with four bolts.

Trouble shooting with panel viewer and illumination.

The below instructions have to be executed by an electronics technician.

- The illumination does not work (14 Volts AC model).
 1. Check that the 14-15 Volts adapter plug is connected to the viewer socket and the main power of 220-240 Volts.
 2. Check that the adapter gives 14-15 Volts AC, not dc and that the adapter is strong enough.
 3. Check that the plug to the viewer has the 2.1 mm. inner diameter type attached to the cable. (outer diameter 5.5 mm.)
 4. Open the rear cover of the viewer and check that the red LED is lit up, if so, then the adapter is working, the 12 Volt DC circuit is working, the high voltage inverter or the CCFL lamp might be broken.



12 Volts AC to 12 Volts DC rectifier inside the viewer.

- Nothing seems to be broken, it does still not work.

Viewer models from mid 2008 (DC adapter models) are protected against wrong polarity connections, not high adapter voltages. You could damage the inverter (high voltage unit for the CCFL tube) and the light will not turn on even with the correct adapter. Check the following:

 1. When it seems like all things to be checked are OK, then the inverter can be broken and needs to be exchanged. You can order the inverter at 'de Wijs'.
 2. Check that the CCFL tube is not broken! The tube is 3 mm. in diameter and can easily break when not handling with care or by accident.

Convince yourself that you have checked the above items before calling to de Wijs and a lot of transport costs are involved for a replacement viewer.

For replacing just the electronics, only the rear part (the whole steel bracket with the lamp and electronics) needs to be sent. The Front of the viewer (lenses and aluminium housing) can be left in the wall.