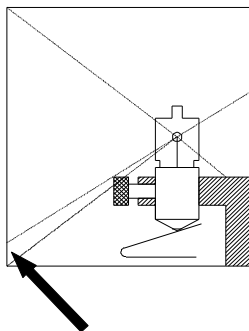


Manual for the halogen light attachment

Replacing the lightbulbs or batteries.

- Remove the bottom of the lightbox by unscrewing the two bolts out of the housing.
- Take the batteryholder out of the lightbox. Replace the batteries, if necessary, and place the holder back into the lightbox.
- Take out the broken lightbulb(s) by unscrewing the small bolt at the front side of the lampholder, replace it with a new one. Look very carefully to the position of the lightbulb. Figur 1 shows the position of the replaced lamp(s).

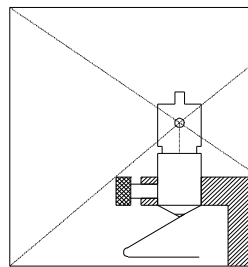
Lamp is mounted to low



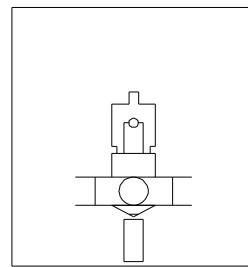
Shadow caused by bolt

Side view

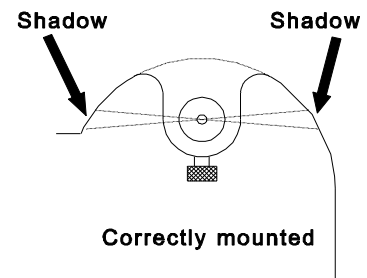
Lamp is correctly mounted



Side view



Front view



Correctly mounted

Top view

Coupling the lightbox to the Combi viewer.

- Remove the bottom of the lightbox by unscrewing the two bolts out of the housing.
- Shift the lightbox into the grooves at both sides of the viewer. The top side of the lightbox, is the side with the switches, so be sure how to shift the lightbox over the viewer. Be very careful with the shifting, the grooves are very accurately made.
- Close the bottomside of the lightbox, be careful with the blue milkglass (blue Opalin glass).

Using the adapter as powersource.

- Connect the adapterplug to the lightbox.
- Connect the adapter to the mains.
- Press the round grey button one time for illumination.
- The brightness is adjusted with the turnwheel at the back of the lightbox.
- By pressing the grey button for a second time, turns the light off. If you did not turn it off within 2 minutes, it will be turned off automatically.
- To turn it on again, press two times the grey button.
- Unplug the adapterplug from the lightbox.
- Press the round grey button for illumination.
- The use is the same as described by using an adapter as powersource.
- When the light turns off automatically, the lightbox is only in standby mode. To turn off the total power use press the grey button again (the green light will turn off).

Charging the battery.



*Hugo de Wijs en zn.
Stereoscopische fotografie
3-D apparatenbouw*

Populierstraat 44, NL-4131 AR Vianen (ZH),
Holland, Tel/Fax. +31 347-372242

- Connect the adapter to the lighthouse and the mains.
- Shift the black switch, in the middle of the lightbox, to the red indicationlight, it starts blinking. This red light indicates that the chargingproces has started.
- During this chargingprocess, the lamps can still be used, but now without the timelimit of 2 minutes.
- The proces stops automatically after 5 hours (the red light stops blinking but remains on)
- Shift the black switch back to the green light, to be sure not starting the charging proces again when connecting the adapter.

Technical data:

Lightbox for H. de Wijs Combi viewer

Size: 110 x 123 x 60 mm. (lxbxh)
illuminated size: 115 x 55 mm. (bxh)
Lightsource: 2 halogeen lamps
for example Sonca type: HPR 50
5,2 Volt, 0,85 Ampère,
Total Powerconsumption " 10 Watt.
Battery: 4x rechargeable 1,25 Volts, Total 5,2 Volts
Adapter: 6 Volts, minimal 1,8 Ampère
Chargecurrent: 250 mA.
Chargetime: 5 hours.
use time: (full battery) " 30 minutes continious use with 1200 mA.H. batteries.